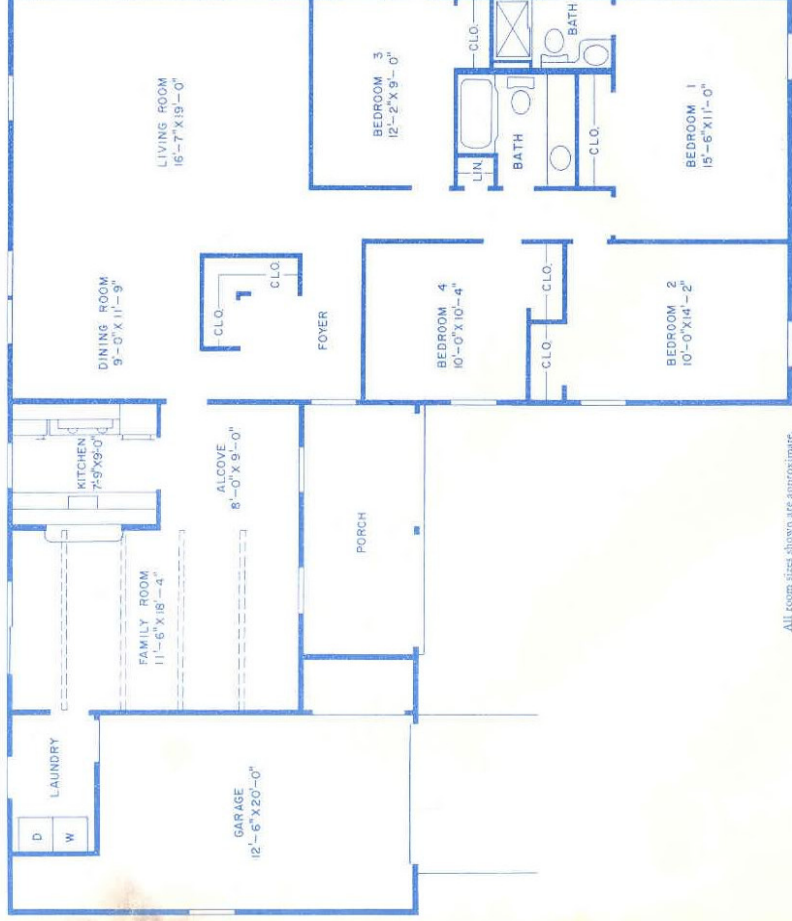




THE OVERBROOKE Garfield Park at Twin Hills

THE OVERBROOKE This is the four-bedroom ranch house in Garfield Park at Twin Hills! From the sheltered front porch, you enter a foyer with wood paneled guest closet. Beyond the foyer, there's a large living room and an attractive dining area. The big ranch-style kitchen area includes a fully-equipped kitchen, a breakfast alcove, and a family room with beamed ceiling, wood paneling, and sliding glass doors to the back lawn. The separate laundry has one door to the back yard, another door into the attached garage. In a separate wing are four spacious bedrooms. The master bedroom has a private bath of its own, and there's another complete bath in the hall. It all adds up to a lot of living space—all on one floor!

The up-to-the-minute kitchen features beautiful wood cabinets, stainless steel sink and range hood. Appliances are all by General Electric and include countertop range, automatic wall oven, two-door refrigerator-freezer, automatic washer, and matching dryer. Both baths have ceramic tile floors and bath areas, and wall-wide illuminated mirrors; one bath has a stall shower, the other a built-in vanity. Plenty of closets, too, with extra storage space over the garage, accessible with pull-down stairs. The Overbrooke is pre-wired for television antenna outlets. Grounds are completely landscaped with many trees and a variety of shrubs. All this, and more, is included—there are no unexpected charges.



All room sizes shown, are approximate.

PLANS AND LANDSCAPING SHOWN AND DESCRIBED ARE APPROXIMATE AND SUBJECT TO CHANGE

Levitt and Sons
INCORPORATED

Route 130, Willingboro, N. J./Phone (609) 877-1100